



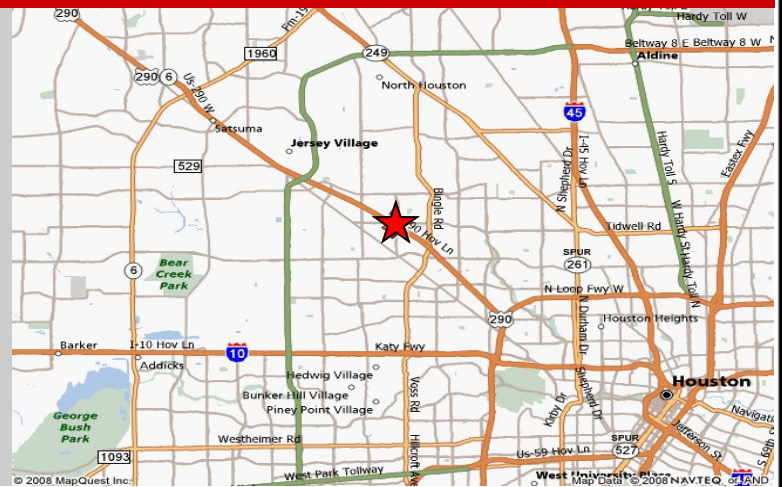
Office Space

**NORTHWEST CROSSING**  
**13333 NORTHWEST FREEWAY**  
**HOUSTON, TEXAS**



***GREAT NORTHWEST HOUSTON LOCATION!***

- Rental Rate \$9.50 NNN PSF + Operating Expenses
- Moving Allowance Available
- Parking Garage - 4 spaces per 1000 SF
- Monument Sign Opportunities on Hwy 290
- Lobby Spaces Available
- Up to 21,300 SF Available
- 6 Story Class A - Built in 2000
- On-site Management / Security



The information contained herein is based upon data supplied by sources deemed reliable, is subject to errors or omissions, and is not in any way, warranted by Yancey-Hausman or by any agent, independent associate or employee of Yancey-Hausman. The information is subject to change without notice.

**PAT POLLAN, CPM®**

832-615-5736

pat@yancey-hausman.com

**JACKIE RITCHIE, CPM®**

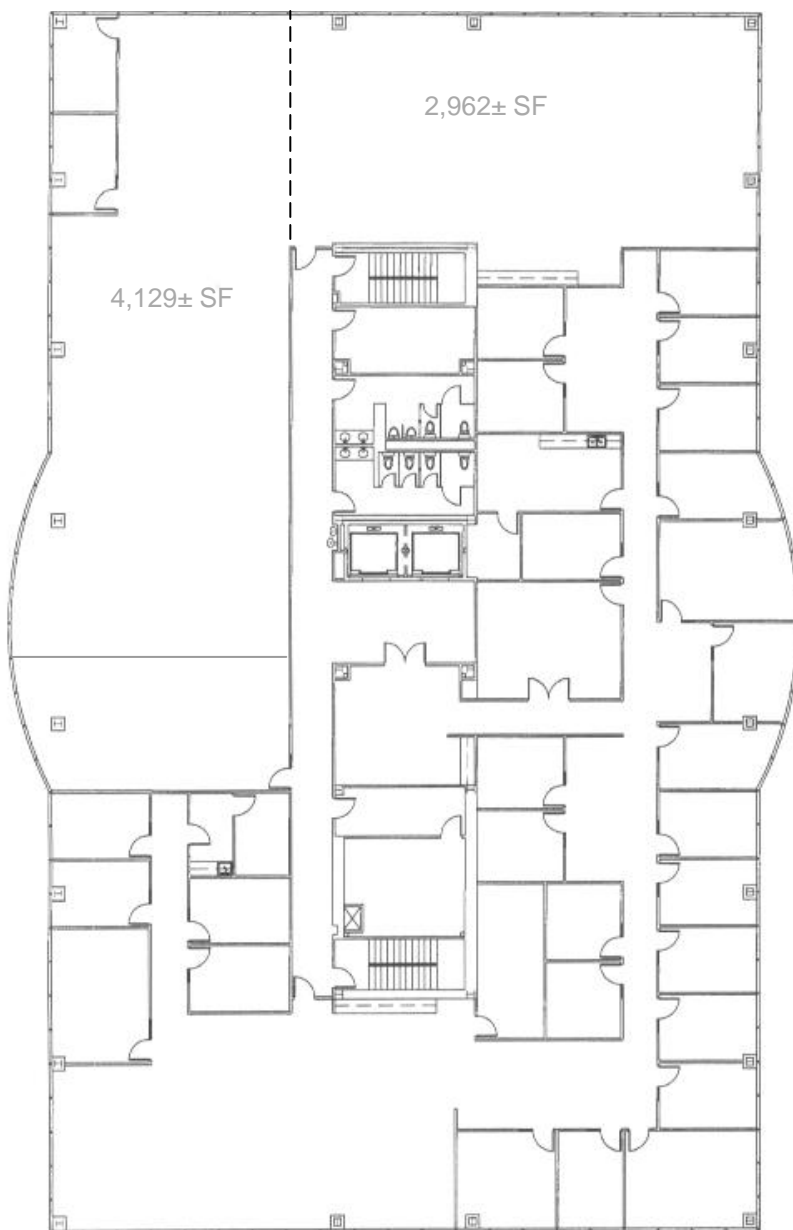
832-615-5734

jackie@yancey-hausman.com



Office Space  
**FOR LEASE**

**NORTHWEST CROSSING**  
**13333 NORTHWEST FREEWAY**  
**HOUSTON, TEXAS**



**LEVEL 5**  
SCALE: 1/8" = 1'-0"  
DATE: 11/11/11  
PROJECT: 13333 NW FREEWAY  
HOUSTON, TX 77040  
YANCEY | HAUSMAN  
COMMERCIAL REAL ESTATE SERVICES  
NORTHWEST CROSSING - PHASE I

*The information contained herein is based upon data supplied by sources deemed reliable, is subject to errors or omissions, and is not in any way, warranted by Yancey-Hausman or by any agent, independent associate or employee of Yancey-Hausman. The information is subject to change without notice.*

**PAT POLLAN, CPM®**  
832-615-5736  
pat@yancey-hausman.com

**JACKIE RITCHIE, CPM®**  
832-615-5734  
jackie@yancey-hausman.com